



2026

Music for

Tony Northey

Creating a Medley

Bundanoon Hall, Monday 5h June

The Medley (gig, strathspey, reel)

Angus McLeod

Mrs Kylie McLeod

Waltz for Peter Ellis

Arranged by

Bob McInnes

MEDLEY

Tig 32 bars Strathspey 32 bar Reel 32 bars

Wha' can help it. (Ruel Gow)

Musical notation for 'Wha' can help it. (Ruel Gow) in 6/8 time, key of D major. The piece consists of three staves of music. The first staff is the melody, and the second and third staves are accompaniment. Chords are indicated below the notes.

Chords: A D A D E, A D A E7 A
A D A E A E A
A D A E A D A E7 A

Glasgow Highlanders

Musical notation for 'Glasgow Highlanders' in 4/4 time, key of D major. The piece consists of four staves of music. The first staff is the melody, and the second, third, and fourth staves are accompaniment. Chords are indicated below the notes.

Chords: D A D Em D A G D A7
D A D Em D A D
D A7 D D G Em D A
D A7 D D G Em D A A D

the Deil Among the Tailors

Musical notation for 'the Deil Among the Tailors' in 6/8 time, key of D major. The piece consists of two staves of music. The first staff is the melody, and the second staff is accompaniment. Chords are indicated below the notes.

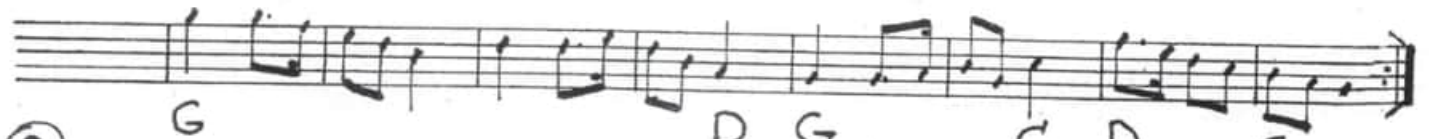
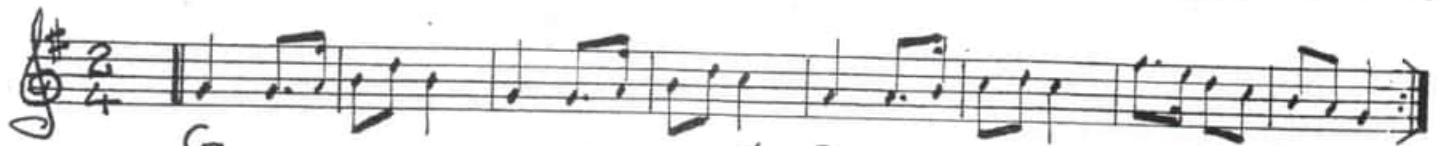
Chords: A Bm E7 A D A E7 A
A Bm E7 A D E7 A

ANGUS McLEOD

2X64-1,1,2,2.

①

Angus McLeod



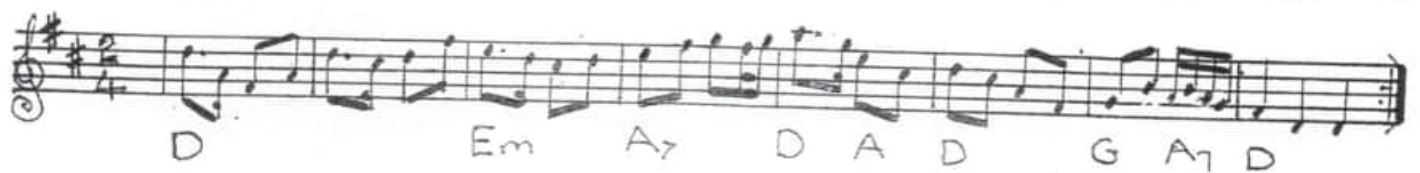
②

Wha Saw The Forty Second?



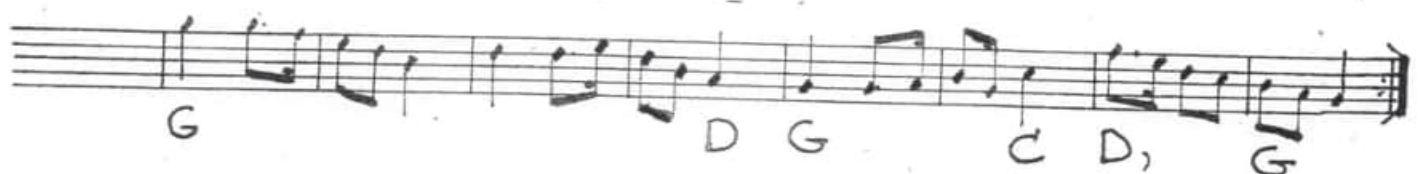
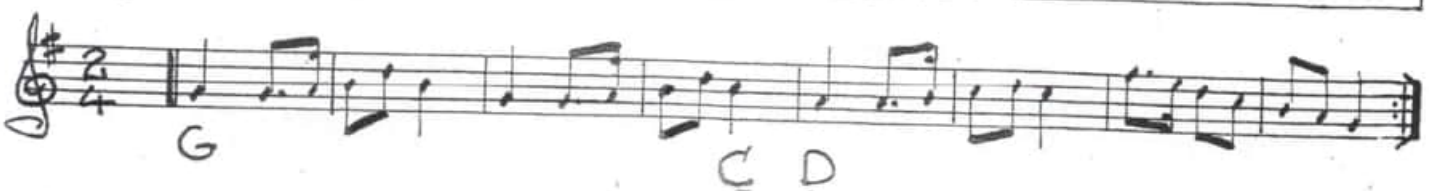
③ IF DANCE REPEATED PLAY 3,3,4,4 below

Waves of Torq



④

Angus McLeod



MRS KYLIE MACLEOD - 3X32 Strathspey

Dance by Tony Northey, Tune by Ian Macleod

Mrs. Kylie Macleod (by Ian Macleod and Bob McClines)

1st 32 and 3rd 32

D E_B D A
D G D A D
D E_m D A
D G D A D FIN

2nd 32

D G D E_m D A
D G D G D A D
D E_m D A
D G D A D
D E_m D A
D G D A D Da Capo

WALTZ FOR PETER ELLIS - 6X32-1,2,3.

1. "TAKE YOUR PARTNERS" Dance by TONY NORTHEY
Music by BOB McINNES

Musical notation for the first piece, consisting of four staves. The notes are in treble clef with a key signature of one sharp (F#). The chords are: D, G, A, A, A7, D; D, G, A, A, D; D, G, A, A, D; D, G, A, A, D.

2. "COLLECTOR'S CHOICE"

Musical notation for the second piece, consisting of four staves. The notes are in treble clef with a key signature of one sharp (F#). The chords are: Em, G, D, D, G, D, Em; Em, G, D, D, G, D, Em; C, G, D7, G, C, G, D, Em; C, G, D7, Bm, Em, G, D, Em.

"CASTLEMAINE"

Musical notation for the third piece, consisting of four staves. The notes are in treble clef with a key signature of two sharps (F# and C#). The chords are: A, D, A, A, E; A, D, A, D, E, A; D, A, E, A; D, A, E7, D, E, A. The piece ends with the word "FIN" written below the final staff.